

It is recommended that all items supplied by Jennings Seats are installed by a qualified and competent professional.

If you have any questions regarding the installation of the products supplied, please call 01270 257417.

With each swivel you should have the following:

X4 M10 15mm Dome head bolt

X12 5mm Spacer (driver side only)

X4 M10 Nyloc Nut

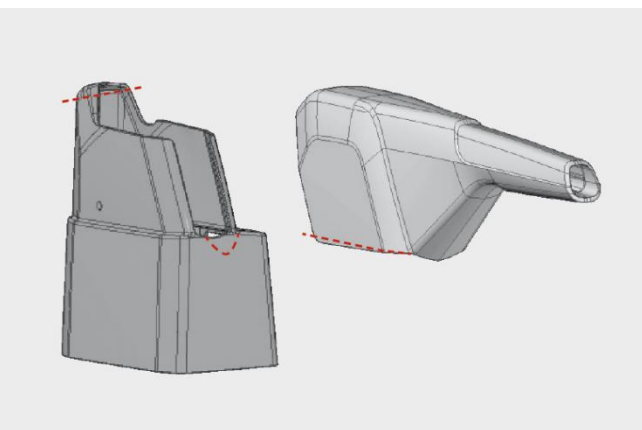
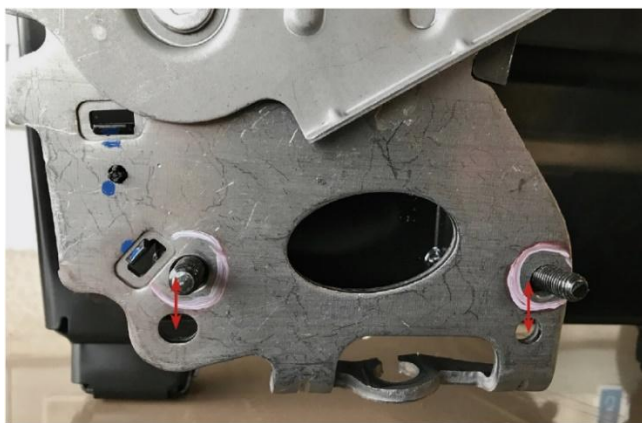
X4 M10 Washers

- Before starting work on the vehicle, ensure that the vehicle cannot move whilst being worked on. i.e have the vehicle on a workshop ramp or the wheels chocked and the vehicle in gear.
- Slide the seat all the way forwards, this will expose the bolts holding the seat sliders in position. Undo the rear bolts.
- Slide the seat all the way backwards. Remove the front bolts.
- Check for any electrical plugs and disconnect. Normally there is a plug going to the seatbelt buckle.
- Remove the seat from the vehicle. On some vehicles you have to pull the seat towards you before pulling up as it is locked in position.
- Once the seat is removed, you should have clear access to the top of the seat base frame, which has four threaded holes in the top face.
- Offer the swivel up to the top face of the base box. The swivel should be orientated with the orange lever pointing towards the centre of the vehicle (pictures on other sheet supplied).
- Rotate the swivel 45 degrees to expose the holes in the bottom plate (ensure the swivel is not going to be dropped when doing this!).
- Place the 5mm spacers between the base box and the swivel. (Driver side only). This will allow the clearance needed to rotate the swivel. Passenger side skip to the next step.
- With access to the holes in the bottom plate of the swivel, fasten the swivel to the base frame. Use the bolts removed from the seat sliders. Install the bolts in a diagonally opposite pattern and tighten by equal measure, incrementally, in the same pattern.
- The swivel should now be secured to the base frame.
- The seat sliders have a locating pin on each side just in front of the rearmost holes. This will require cutting off to allow the seat to mount flat onto the swivel. Alternatively, you can drill two new holes to suit.
- Install the 20mm bolts with the head facing down and the thread into the track of the slider. Fit a washer under the head of the bolt.
- Install the nut on the bolt in the slide track.
- Install these bolts in the same diagonal method as previous. Fasten securely.
- Re-fit any electrical connectors and the seatbelt, if removed.
- Double check all fastenings are secure. Refer to the workshop manual for any torque figures required.
- The seat may need to be lifted into the high position in order to rotate.
- The handbrake normally needs to be in the off/down position to spin. Again, ensure the vehicle cannot move before disengaging the handbrake.
- The handbrake will need to be re mounted in a lower position to allow the seat to rotate. Please see the corresponding instructions on how to do this.

Please note that with the swivel fitted you may need to adjust your seat height up slightly to allow the lower seat plastics to clear the orange handle.

Please call 01270257417 for any further information.

2017+ VW Crafter/MAN TGE handbrake lowering solution



Step 1 – Remove the handbrake plastics. This is done by pushing the plastic tab on the underside of the handbrake lever. This will allow the plastics to separate.

Step 2 – With the plastics removed, undo the 2 nuts holding the handbrake in position.

Step 3 – Re-drill the mounting holes 25mm (or as much as possible) up from their original position.

Step 4 – Now that the new holes are drilled, you will have to cut the cab floor insulation around the bottom of the handbrake bracket to allow the bracket to mount in the lowered position.

Step 5 – Remount the handbrake in the new position and refit plastics which may need trimming as per the attached picture.

Step 6 – Ensure that the handbrake cables are correctly tensioned as lowering the handbrake can cause slack.

Step 7 – When re-fitting the swivel, refit with the 5mm spacers between the base box and swivel. This will allow extra clearance. You may not require all of the spacers.

Please note that with the swivel fitted, you may need to adjust your seat height up slightly to allow the lower seat plastics to clear the orange handle.

The seat sliders have a locating pin on each side just in front of the rearmost holes. This will require cutting off to allow the seat to mount flat onto the swivel. Alternatively, you can drill two new holes to suit.

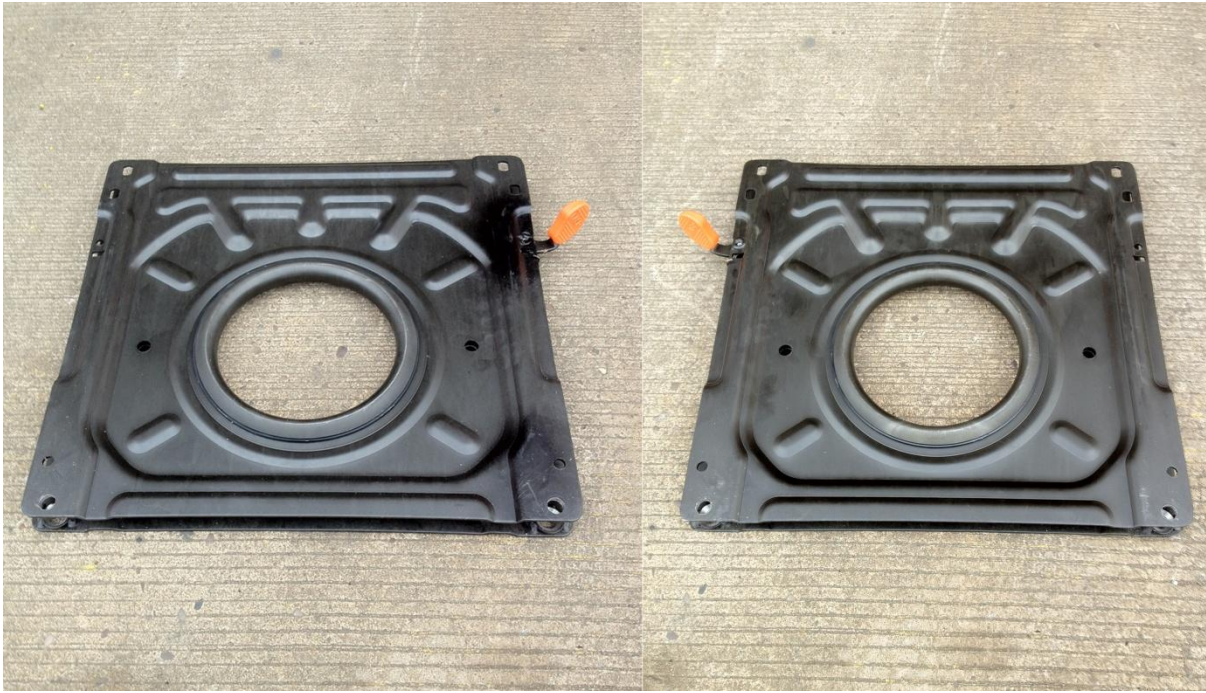
Please call 01270 257417 for any further information.

FRONT OF THE VEHICLE

- The Orange handle should point towards the front and centre of the vehicle, and pointing upwards. (As picture shows)
- The large centre circle of the swivel should be off centre towards the rear of the vehicle.
- The swivels rotate towards the centre of the vehicle (Clockwise for the passenger's side and Anti clockwise for the driver's side).
- The best way to fit them is to swivel the plate so there is access to the bottom plate holes, then bolt the bottom of the swivel to the top of the base box/frame, then bolt the seat and runners to the top of the swivel.

PASSENGER'S SIDE

DRIVER'S SIDE



BACK OF THE VEHICLE