

FASP Single Swivel Fitting Sprinter 907 and Vito/Viano W447.

Part number 1305.8482 DX = Driver SX = Passenger

It is recommended that all items supplied by Jennings Seats are installed by a qualified and competent professional.

If you have any questions regarding the installation of the products supplied, please call 01270 257417.

With each swivel you should have the following:

X4 M10 20mm Hex Head Bolt

X4 M10 Nyloc Nut

X4 M10 Washers

X1 Handbrake lowering bracket, with x2 M10 countersunk bolts and x2 M10 washers (Sprinter only).

- Before starting work on the vehicle, ensure that the vehicle cannot move whilst being worked on. i.e have the vehicle on a workshop ramp or the wheels chocked and the vehicle in gear.
- Slide the seat all the way forwards, this will expose the bolts holding the seat sliders in position. Undo the rear bolts.

- Slide the seat all the way backwards. Remove the front bolts.
- Check for any electrical plugs and disconnect.
- Remove the seat from the vehicle. On some vehicles you have to pull the seat towards you before pulling up as it is locked in position.
- Once the seat is removed, you should have clear access to the top of the seat base frame, which has four threaded holes in the top face.
- Offer the swivel up to the top face of the base box. The swivel should be orientated with the orange lever pointing towards the centre of the vehicle (pictures on other sheet supplied).
- Rotate the swivel 45 degrees to expose the holes in the bottom plate (ensure the swivel is not going to be dropped when doing this!).
- With access to the holes in the bottom plate of the swivel, use the bolts removed from the seat sliders and fasten them to the base frame. Install the bolts in a diagonally opposite pattern and tighten by equal measure, incrementally, in the same pattern.
- The swivel should now be secured to the base frame.
- The locating pins on the underside of the seat slider will slot into the holes on the top of the swivel. The locating pins may need cutting down slightly.

- Install the x4 20mm hex head bolts in the top plate of the swivel with the head facing down and the thread into the track of the slider. Fit the x4 washers on the threads in the track before installing the nuts.
- Install the x4 nuts on the bolts in the slide track.
- Install these bolts in the same diagonal method as previous. Fasten securely.
- Re-fit any electrical connectors and the seatbelt, if removed.
- Double check all fastenings are secure. Refer to the workshop manual for any torque figures required.
- The seat may need to be lifted into the high position in order to rotate.
- The handbrake normally needs to be in the off/down position to spin. Again, ensure the vehicle cannot move before disengaging the handbrake.
- The driver's side swivel for the Sprinter requires the handbrake to be remounted in a lower position in order for the seat to rotate.
- Please see the corresponding handbrake lowering instructions.
- You may find that the plastic covers on the seat base may need trimming to suit.

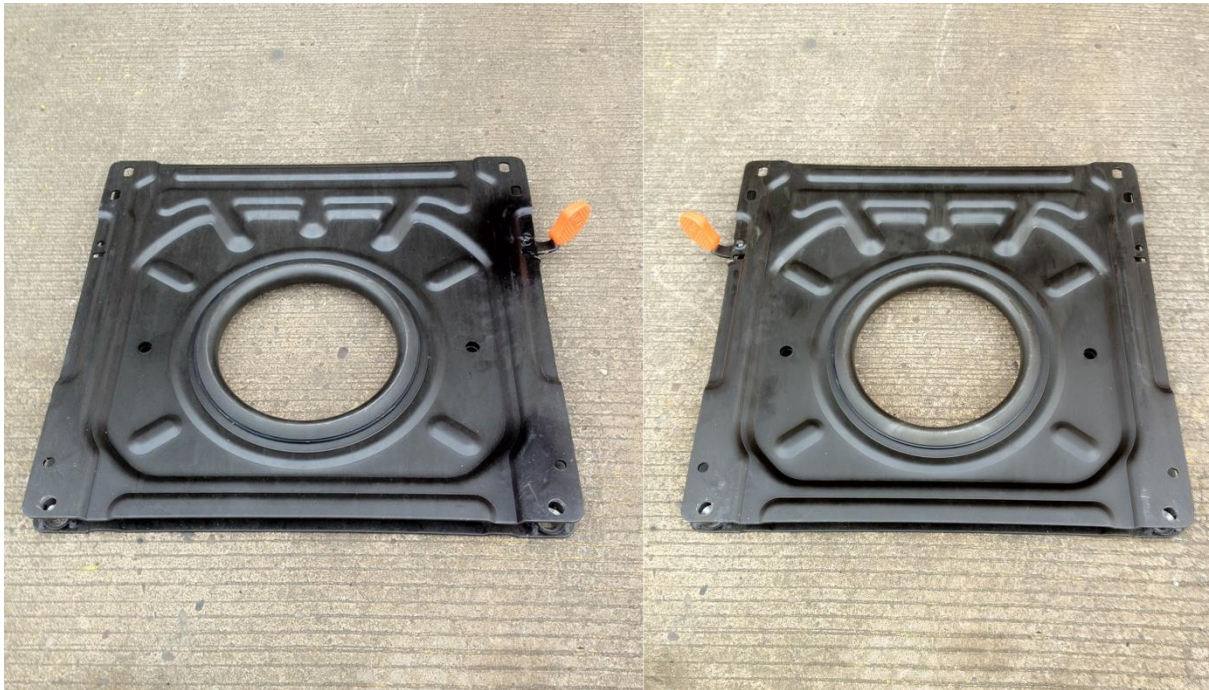
Please call 01270257417 for any further information.

FRONT OF THE VEHICLE

- The Orange handle should point towards the front and centre of the vehicle, and pointing upwards. (As picture shows)
- The large centre circle of the swivel should be off centre towards the rear of the vehicle.
- The swivels rotate towards the centre of the vehicle (Clockwise for the passenger's side and Anti clockwise for the driver's side).
- The best way to fit them is to swivel the plate so there is access to the bottom plate holes then bolt the bottom of the swivel to the top of the base box/frame then bolt the seat and runners to the top of the swivel.

PASSENGER'S SIDE

DRIVER'S SIDE



BACK OF THE VEHICLE